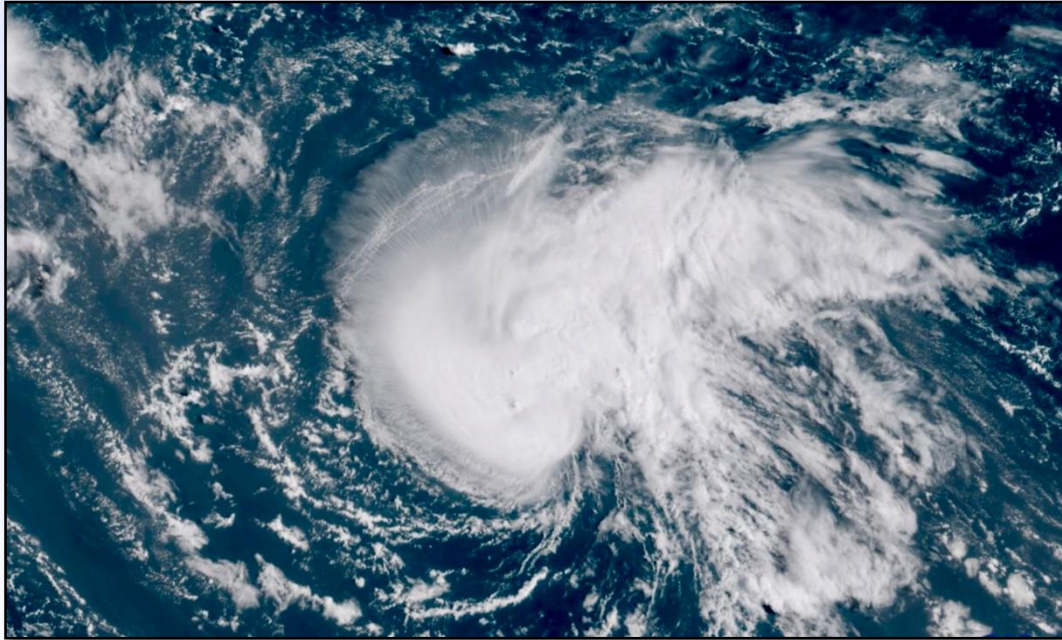


North Carolina State Emergency Operations Center



Hurricane Florence

Monday, 11 September 2018 – 0700

State EOC Schedule

Tuesday, September 11, 2018

0700	Shift Brief
1000	Executive Summary Published
1130	Lunch
1600	Executive Summary & Situation Report Published
1600	Operational Planning Meeting
1730	Dinner
1900	Shift Brief



Administrative Details

- Event Name:
 - 20180907 Hurricane Florence
- Reported Costs to Date: **\$165,073**
- Reminders:
 - Document all costs in Finance Board
 - Document all activities in Significant Events Board
 - Update ESF/Situation Report Board
 - Check In/Out Room to Room

Incident Objectives

State EOC

1. Respond to resource requests and tasking within 30 minutes of assignment.
2. Be prepared to support county response activities.
3. Conduct an active public awareness campaign throughout the severe weather event.
4. Develop a plan for post-event impact assessment and recovery activities.
5. Monitor resource use and develop a demobilization plan for the release of resources as the situation allows.

Emergency Services

1. Coordinate with SERT partners to mobilize life safety resources when requested throughout event.
2. Maintain catalog of available state law enforcement mission packages to support local safety and security measures throughout the event.

RCC's

1. Support local government preparation, response, and recovery efforts for the duration of the event. Mission priorities are life saving, rescue, evacuation, life sustaining power generation and transportation and traffic control.
2. Review and validate assignment of mission requests received by RCC from the State EOC. Execute missions within prescribed timelines.
3. Track all RCC resources and expenditures.
4. Manage conference calls, produce branch tactical plan, situation reports and manage resources.

Business EOC

1. Maintain situational awareness of state and private sector partner status and actions throughout the event.
2. Process Re-Entry Certifications within 30 minutes throughout the event.

Incident Objectives

Communications

1. Efficiently manage statewide talkgroups for effective allocation in support of anticipated local, regional, and state level operations.
2. Proactively evaluate primary and auxiliary operational communications needs based on forecasted weather, anticipated communication degradations, and anticipated surges in operations.
3. Coordinate with SERT partners to quickly mobilize communication resources when requested throughout the event.

Infrastructure

1. Monitor and disseminate information to SERT partners and counties regarding power outages/disruptions/restorations and road closures throughout the event.
2. Coordinate with Risk Management to evaluate impacts to structures and disseminate relevant information to SERT partners and county officials throughout the event.

Risk Management

1. Develop and disseminate impact forecast and analysis products for impacted areas.
2. Monitor and maintain WebEOC for resource requests.

Logistics

1. Respond to resource requests and tasking within 30 minutes of assignment.
2. Provide equipment and commodities in support of impacted communities as quickly as possible.
3. Coordinate travel, lodging and meals for State EOC staff as needed.

Human Services

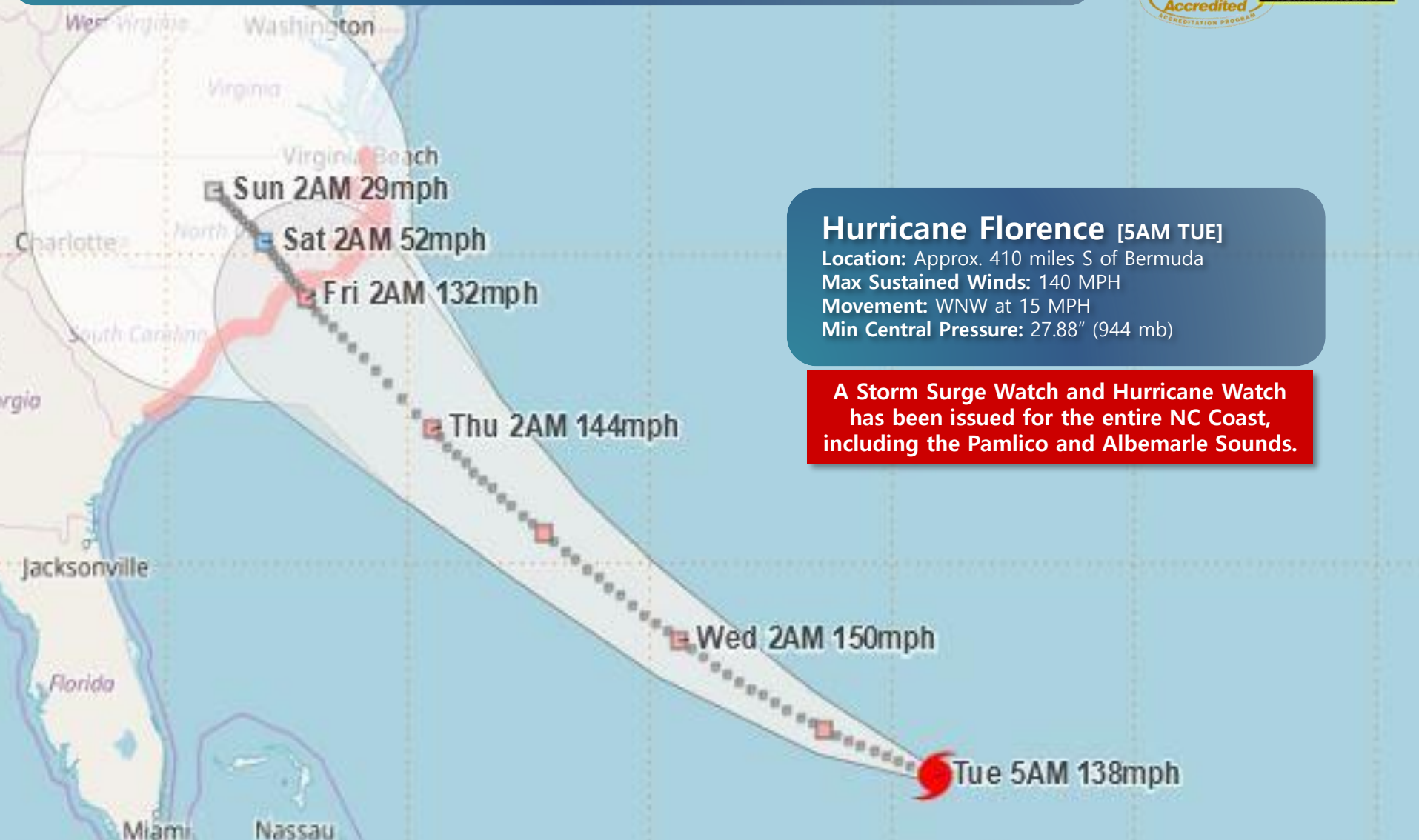
1. Execute plans for mass care and sheltering of evacuees, affected persons, pets and commercial animals.

Weather



HURRICANE FLORENCE

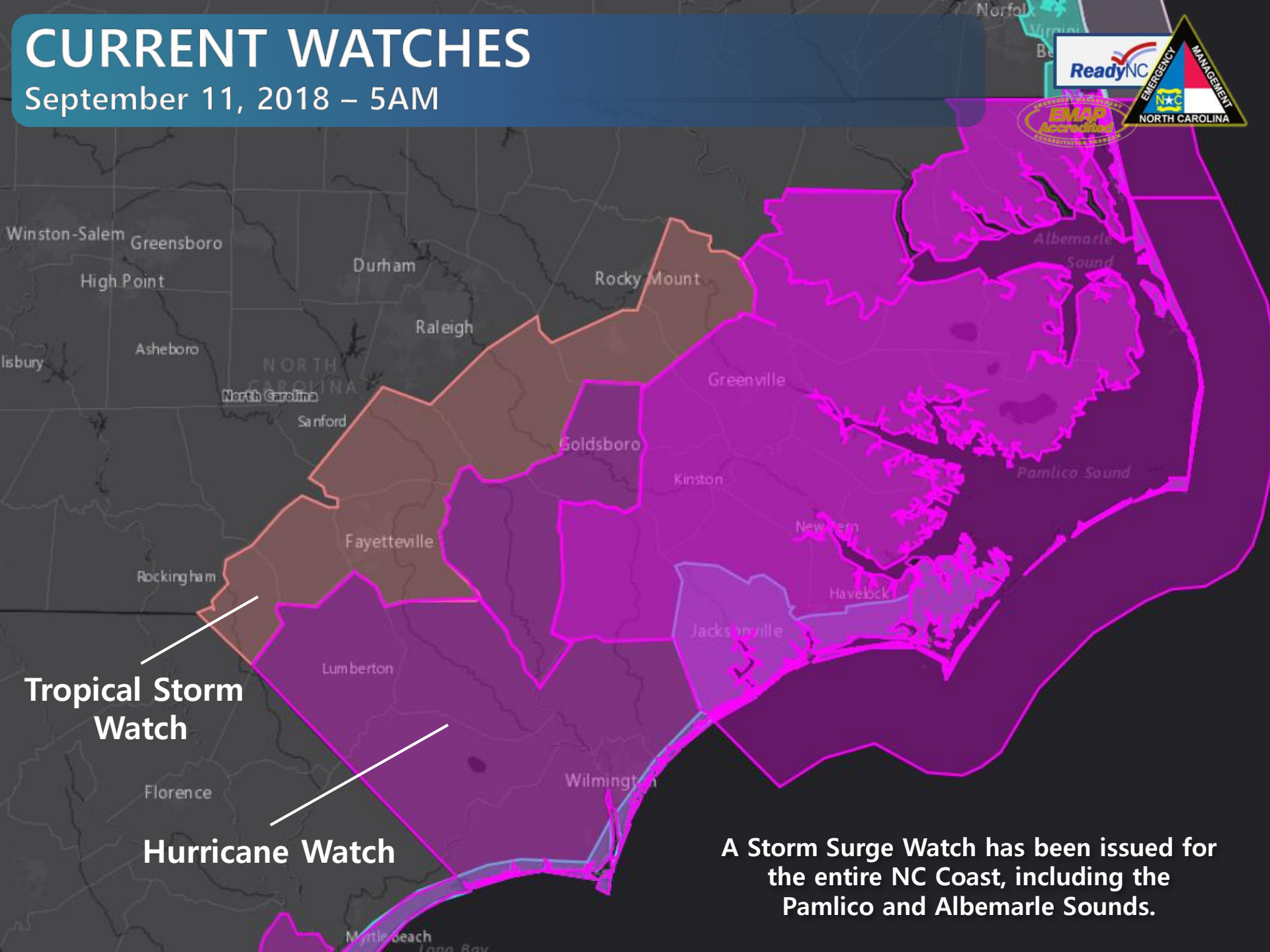
September 11, 2018 – 5AM



The NHC Track Forecast Cone is NOT an Impact Cone
Significant impacts will be felt far from the center of the storm

CURRENT WATCHES

September 11, 2018 – 5AM



**Tropical Storm
Watch**

Hurricane Watch

**A Storm Surge Watch has been issued for
the entire NC Coast, including the
Pamlico and Albemarle Sounds.**

HAZARDS SUMMARY

HURRICANE FLORENCE

September 11, 2018 – 5AM



HAZARD	DETAILS	IMPACTS	THREAT
Storm Surge	S of Cape Fear: 4-6' Cape Fear-Cape Lookout: 6-12' (Neuse & Pamlico Rivers) Cape Lookout-Ocracoke Inlet: 5-8' N of Ocracoke Inlet: 3-5'	Very dangerous inundation amounts are expected along the NC coast Thu-Sat.	Extreme
Inland Flooding	Portions of Eastern NC: 15-20+" Central/Eastern: 6-15" (Up to 30" along track)	Sig. threat to life and property; impassable roads; road wash-outs. Heavy rain will begin Thu and could continue through the weekend. Longer-term river flooding likely, and mountain landslides possible.	Extreme
Damaging Winds	Hurricane-Force winds are likely near the coast Tropical Storm-Force winds likely across much of state	Significant downed trees and widespread/prolonged power outages across the state; significant structure damage possible as Florence could make landfall as a Category 4 hurricane.	Extreme
Tornadoes	A few tornadoes are possible Thu and Fri, especially across eastern NC. Tornadoes in tropical systems are typically short-lived and weak.		Moderate
Marine & Coastal	Life-threatening surf and rip currents will continue for much of the week.		Extreme

Threat Levels:

None

Low

Moderate

High

Extreme

POTENTIAL STORM SURGE FLOODING MAP

September 11, 2018 – 5AM



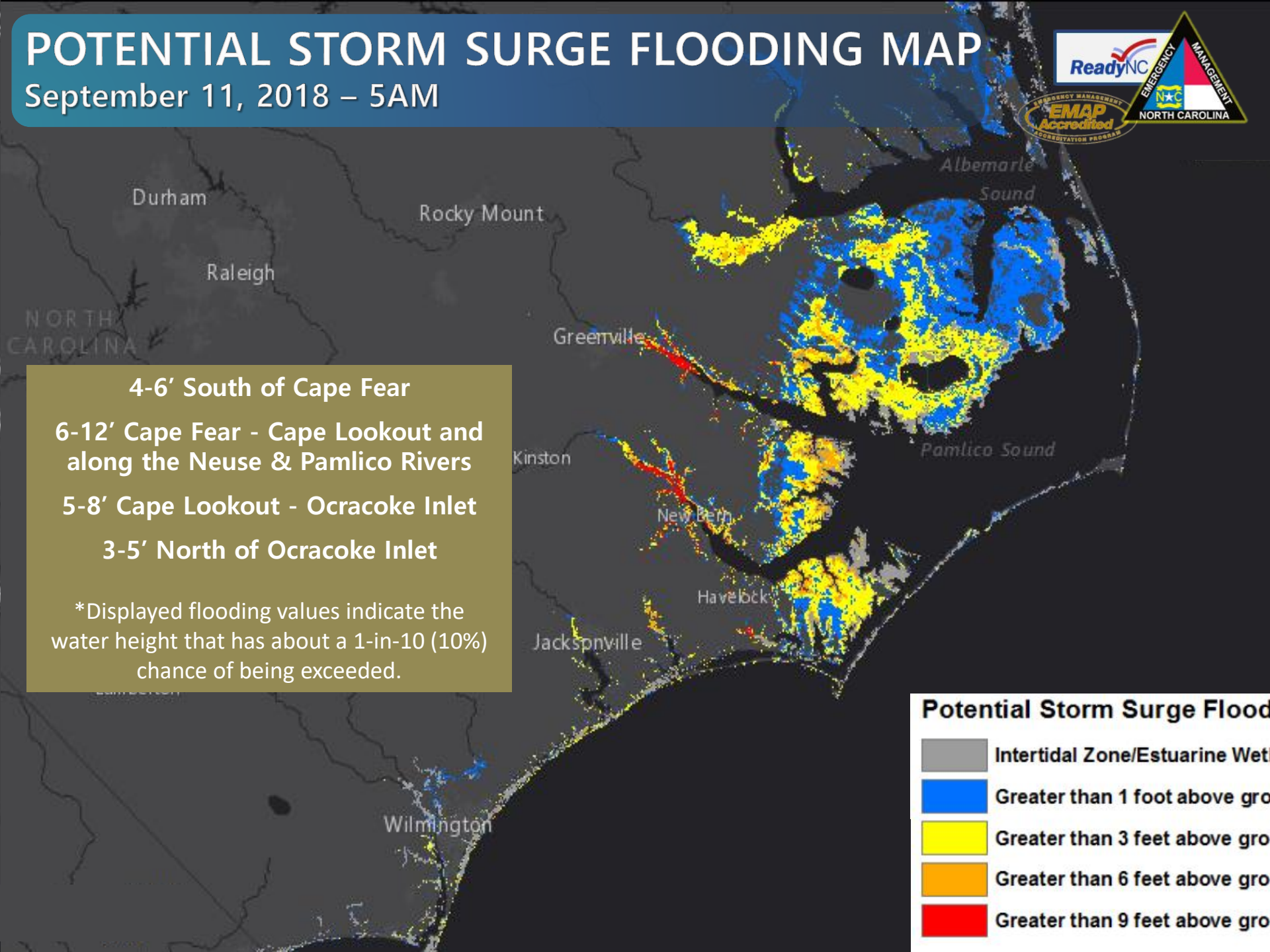
4-6' South of Cape Fear

6-12' Cape Fear - Cape Lookout and along the Neuse & Pamlico Rivers

5-8' Cape Lookout - Ocracoke Inlet

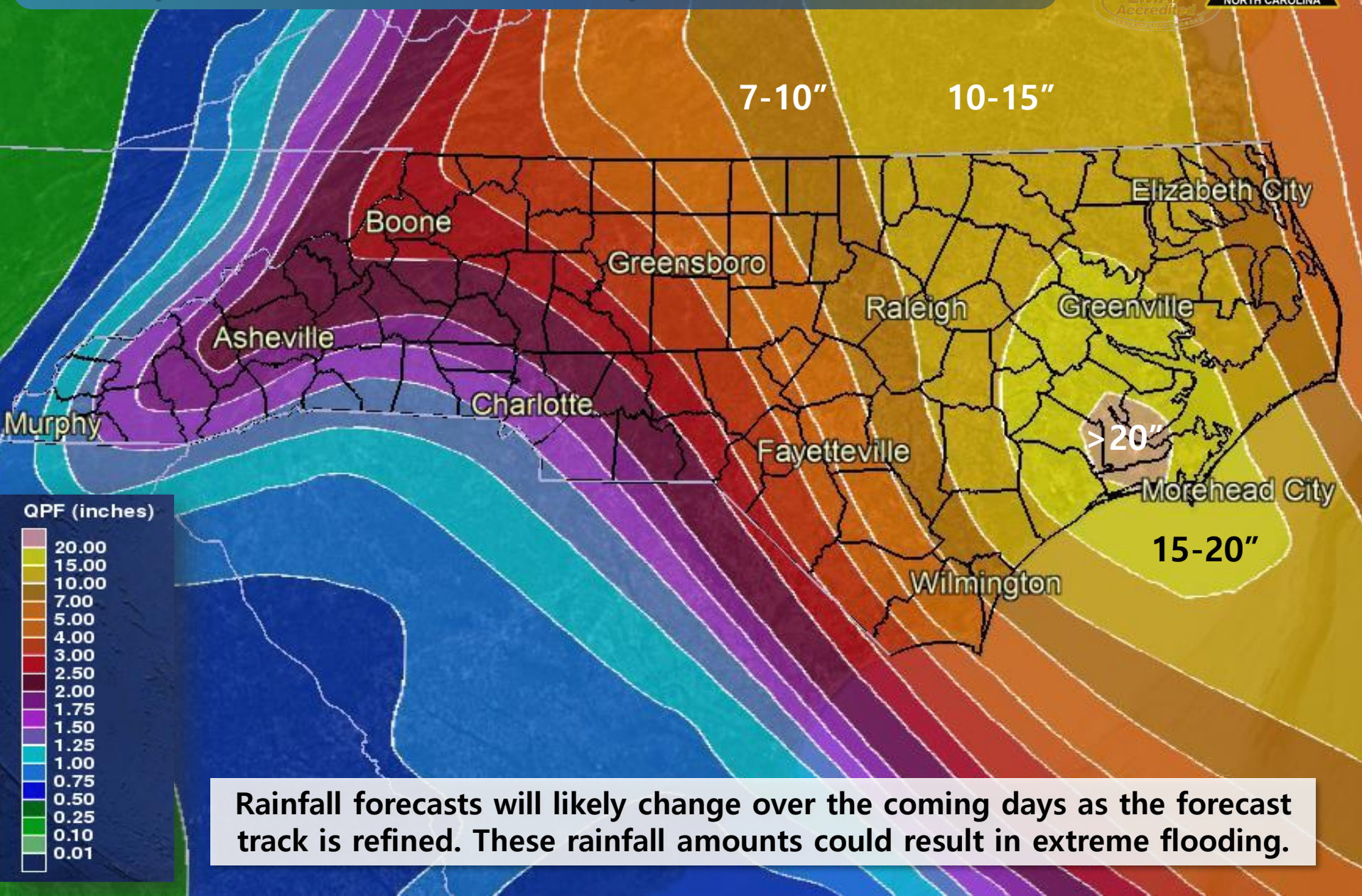
3-5' North of Ocracoke Inlet

*Displayed flooding values indicate the water height that has about a 1-in-10 (10%) chance of being exceeded.



7-DAY RAINFALL FORECAST

8AM September 11, 2018 to 8AM September 18, 2018



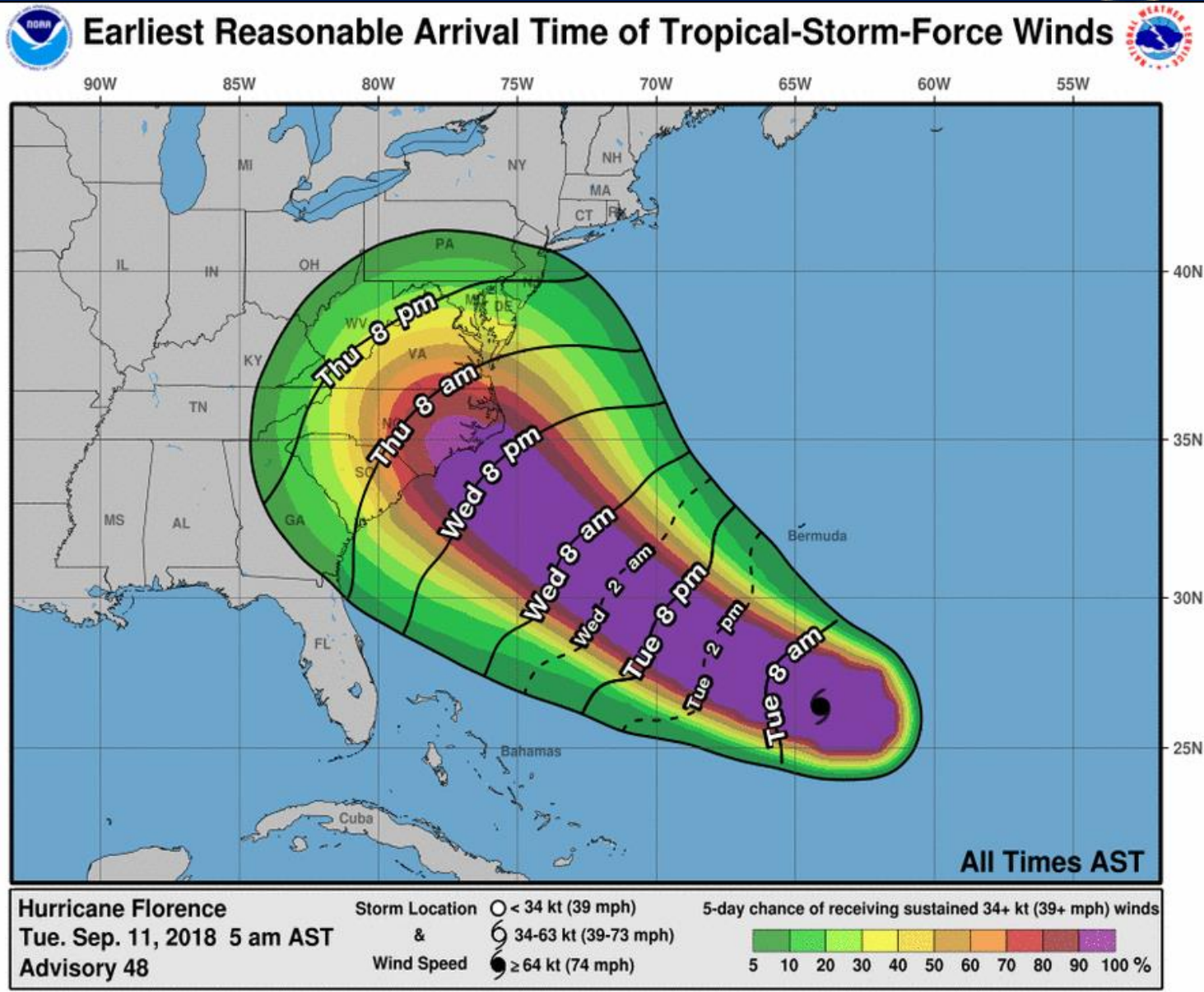
QPF (inches)



Rainfall forecasts will likely change over the coming days as the forecast track is refined. These rainfall amounts could result in extreme flooding.

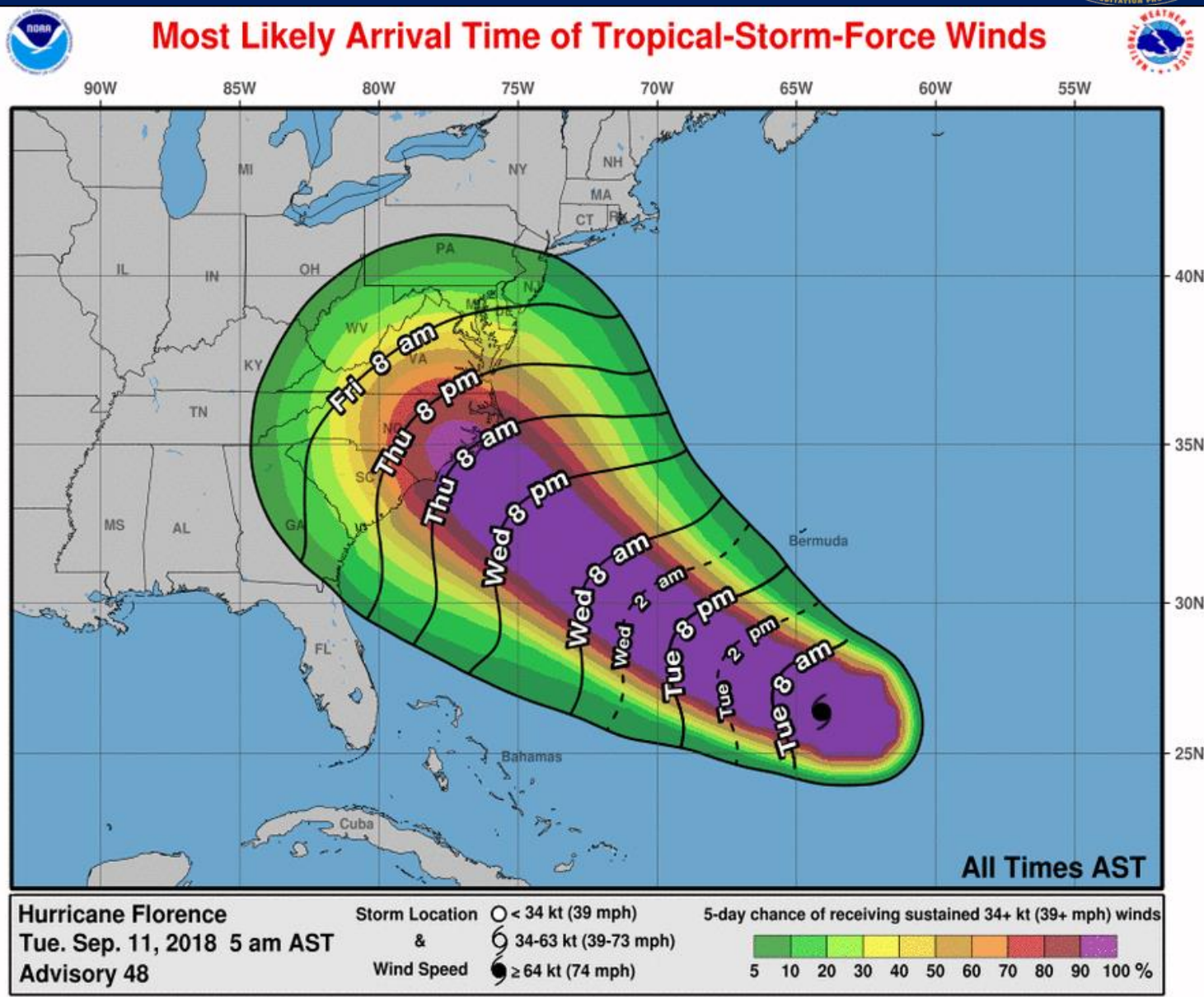
ARRIVAL OF TS FORCE WINDS

September 11, 2018 – 5AM



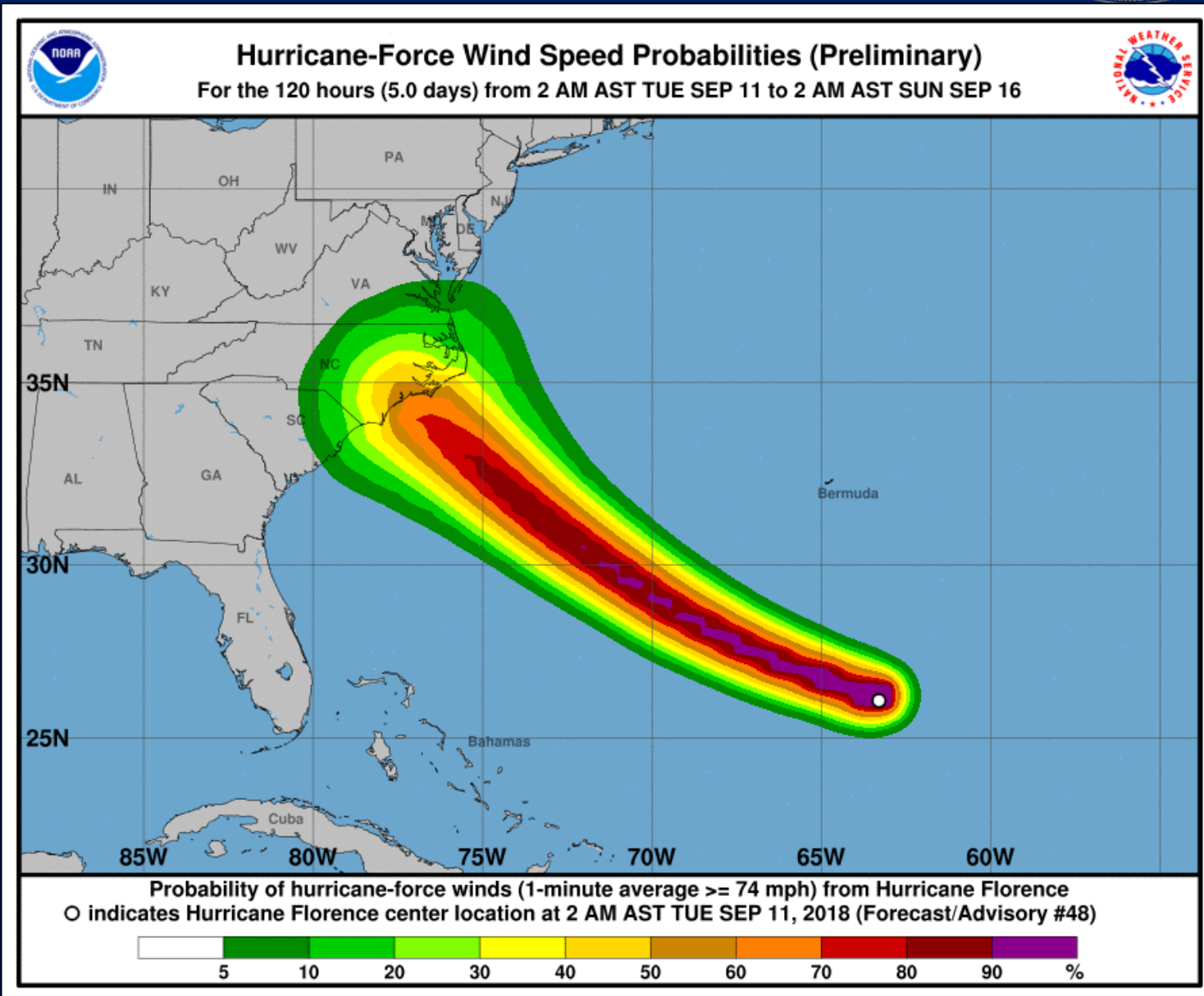
ARRIVAL OF TS FORCE WINDS

September 11, 2018 – 5AM



HURRICANE-FORCE WIND PROBABILITIES

September 11, 2018 – 5AM



HURRICANE FLORENCE

 SEPTEMBER 11, 2018 – 5AM



Key Takeaways:

- **Intensification:** Additional strengthening is forecast over the next 48 hours, but fluctuations in intensity is expected.
- **Life-Threatening Impacts Likely:** Extreme storm surge at the coast and inland flooding from heavy rain. Very dangerous wind impacts are also expected, with widespread downed trees and prolonged power outages.
- **Widespread Impacts Likely:** It is important to not focus on the exact track as dangerous hazards will extend well away from the storm's center.
- **Preparedness Helps:** Those with emergency kits and plans in place fare better in disasters. Preparations should be completed by **Wed evening**.



Situation Report



County Impacts

Counties continuing to meet with elected officials and making preparations.

State of Emergency (20):

- 16 in Eastern Branch
- 4 in Central Branch

School closings: 11 Districts closed, 6 closing Wednesday

Colleges and Universities in East and Central NC are closing.

Evacuations

Dare	Hatteras Island	Mandatory	9/10/18
Dare	Entire County	Mandatory	9/11/18
Currituck	Outer Banks	Mandatory, visitors and guests	9/11/18
Hyde	Ocracoke Is.	Mandatory, visitors and guests, amended to all persons, 9/11, 5:00 AM	9/10/18
Brunswick	Low-lying, Substandard housing or mobile homes	Mandatory	9/11/18
Brunswick	Unincorporated areas	Voluntary	9/11/18
Bertie	Waterfront, low lying areas	Voluntary	9/12/18
Onslow	Unincorporated	Voluntary	9/10/18
Onslow	N Topsail Beach	Mandatory	9/11/18
Onslow	Surf City	Voluntary	9/10/18

Resources – Emergency Services & National Guard

Resource requests continue to be processed.

Major items being requested are

- Search and Rescue Teams
- Swiftwater Teams
- High Clearance Vehicles
- Medical Shelter Assets
- Medical Evacuation Support

Overall SERT Response

Location/Resource	Status	Level
State EOC	Activated	2
Business EOC	Activated	Y
Recovery EOC	Activated	Y
Joint Information Center	Activated	Y
RCC East	Activated	Y
RCC Central	Activated	Y
RCC West	Activated	Y
EMAC	Activated	Y

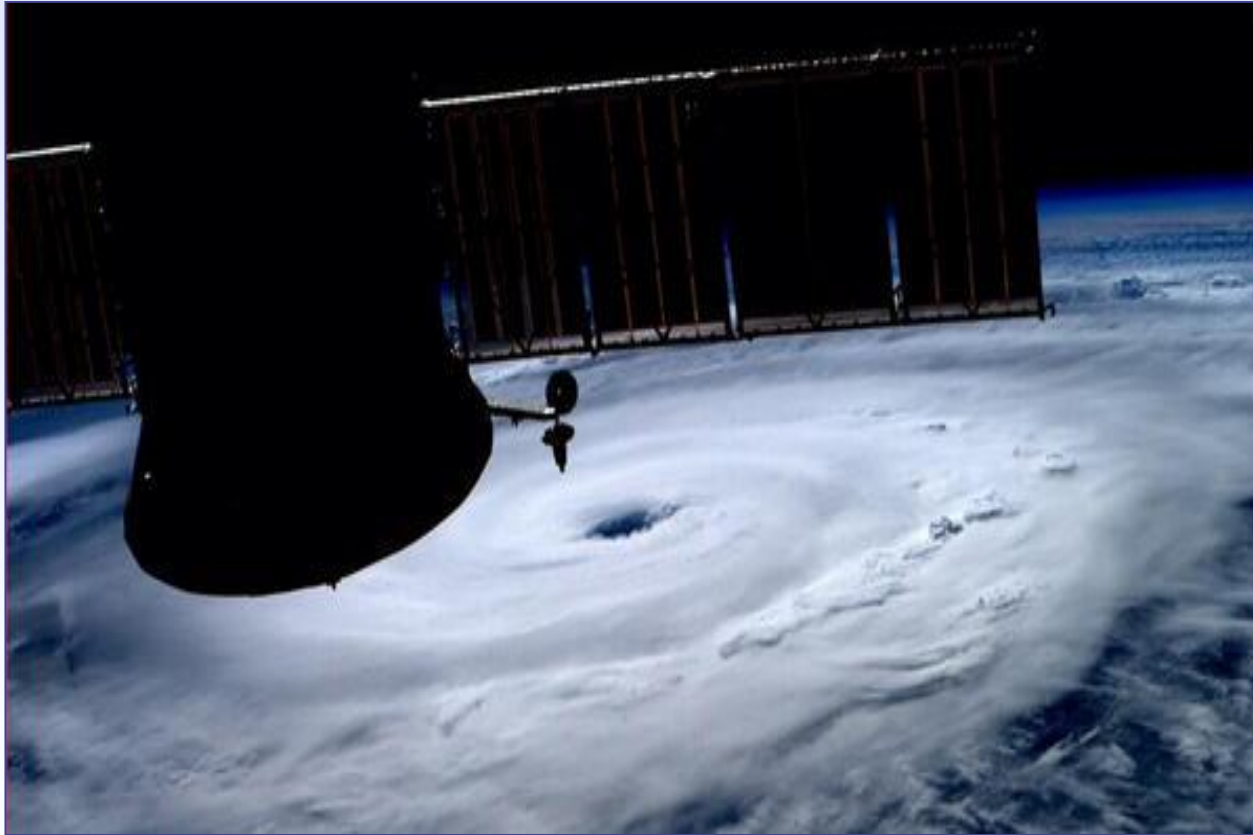
Federal	Activated
FEMA IMAT	Y
FEMA Liaison Officer	Y
FEMA Incident Support Base	Y
FCO	Y

Date	Executive Orders
9/7/2018	#51 - State of Emergency Declaration
9/7/2018	#52 - Temporary Suspension of Motor Vehicle Regulations
9/10/2018	#53 – Fuel Transportation Waiver

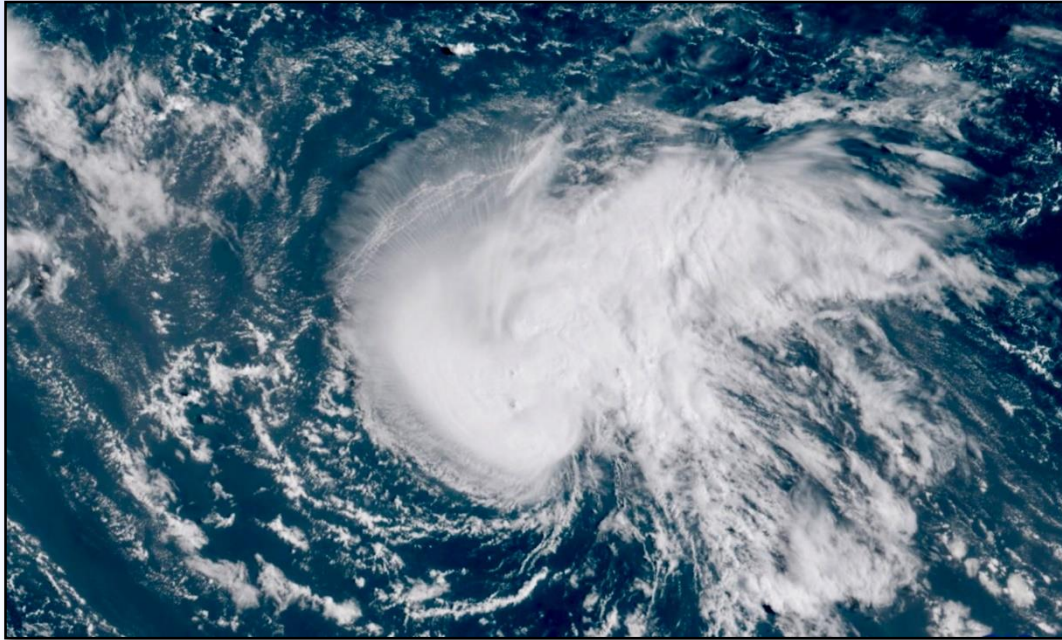
Around the Room

- Operations
- Logistics
- Recovery
- Risk Management
- Resiliency
- Administration/Finance
- Joint Information Center
- Business EOC
- FEMA

SERT Leader Guidance



North Carolina State Emergency Operations Center



Hurricane Florence

Monday, 11 September 2018 – 0700